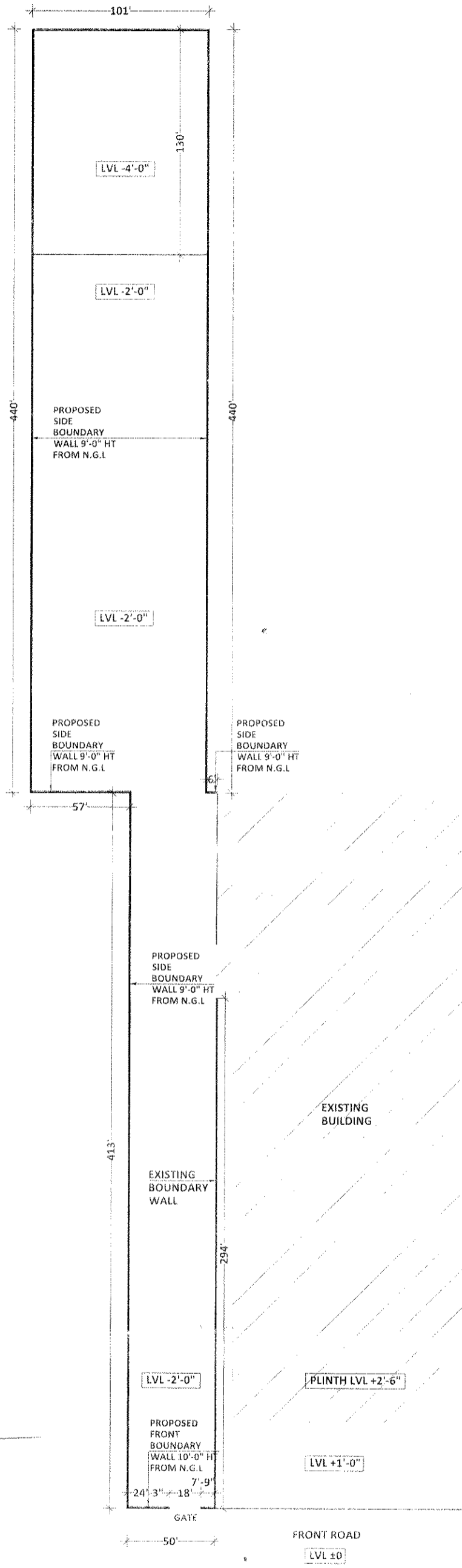


S.No.	DESCRIPTION
1	Earth work in excavation of foundation of structures as per drawing and technical specification, including setting out, construction of shoring and bracing, removal of stumps and other deleterious matter, dressing of sides and bottom and backfilling with excavated surplus soil. In Ordinary soil Mechanical Means Depth upto 3 m
2	Cement concrete 1:6:12 With stone aggregate 40mm gauge mixing by mechanical means using concrete mixer volumetric type
3	Shuttering for faces of concrete foundations and foundation beam & plinth beam (vertical or battering)
4	Mild steel requirement for RCC work where not including the complete rate of RCC including bending, binding and placing in position complete in all respects. Up to 20mm dia bars
5	Reinforced cement concrete M-20 mechanically batch mixed using batch type concrete mixer as per IS:1791 and vibrated by needle vibrator but excluding steel reinforcement centring and shuttering in foundation and plinth.
6	Centering and shuttering for columns (Square or rectangular or poly gonal in plain)
7	Reinforced cement concrete M-20 mechanically batch mixed using batch type concrete mixer as per IS:1791 and vibrated by needle vibrator but excluding steel reinforcement centring and shuttering in superstructure.
8	First class burnt work laid in cement sand mortar 1:7 in foundation and plinth
9	First class burnt brick work laid in cement sand mortar 1:7 in first storey upto 4 metres above plinth level.
10	Damp proof course 7.5 Cm thick cement concrete 1:2:4 with 2 coats of bitumen 20/30 penetration at 1.65 Kg per sqm laid hot and sanded
11	12.5 mm thick cement plaster 1:4
12	Extra for providing and mixing water proofing material in cement plaster work @ 1 kg per 50 kg of cement.
13	Forming groove of uniform size from 12x12mm and upto 25x15mm in plastered surface as per approved pattern using wooden battens, nailed to the under layer including removal of wooden battens, repairs to the edges of plaster panel and finishing the groove complete as per specifications and direction of the Engineer-in-Charge.
14	Providing and laying in super structure for first storey factory made with vibro-hydraulic compaction machine precast Hollow block of cement concrete setting in position with cement mortar 1:3 (1 cement:3 course sand ) including cost of hosting, centering and shuttering complete as per IS:2185 (Part-1): 2005.
15	Preparation of plastered or concrete surface for painting (including sand papering the surface) using ready mixed cement based wall putty by applying two or more coats to get required finish
16	Applying priming coat with cement primer in all shade on newly plastered or concrete exterior surface
17	Wall painting with plastic emulsion paint of approved brand and manufacturer to give an even shade (two or more coats)





BOUNDARYWALL LAYOUT